



# Trafalgar Dock

## First class ferry facilities – details

The new terminal will offer an improved passenger experience and bring this area of the port back into active maritime use.



An exciting  
new waterfront  
for Southampton



Emerging proposals - Red Funnel north elevation

The new terminal building will be approximately 2,100sqm (gross internal area) for Red Funnel and Red Jet, offering improved office and administration space and passenger facilities including two cafés, and a terrace area (current accommodation is approximately 1,100sqm).

Ramboll and Stride Treglown have been working to a brief prepared by Red Funnel with inputs from ABP, and this collaboration ensures that cruise and ferry operations can operate alongside each other, making a more efficient use of the site.

English Heritage and Southampton City Council have advised on the extent of listing and the most significant historic features that need to be retained and protected, and those that can be removed, such as the above ground pumphouse.

“Efficient and well-performing transport networks enable businesses to flourish and attract inward investment”

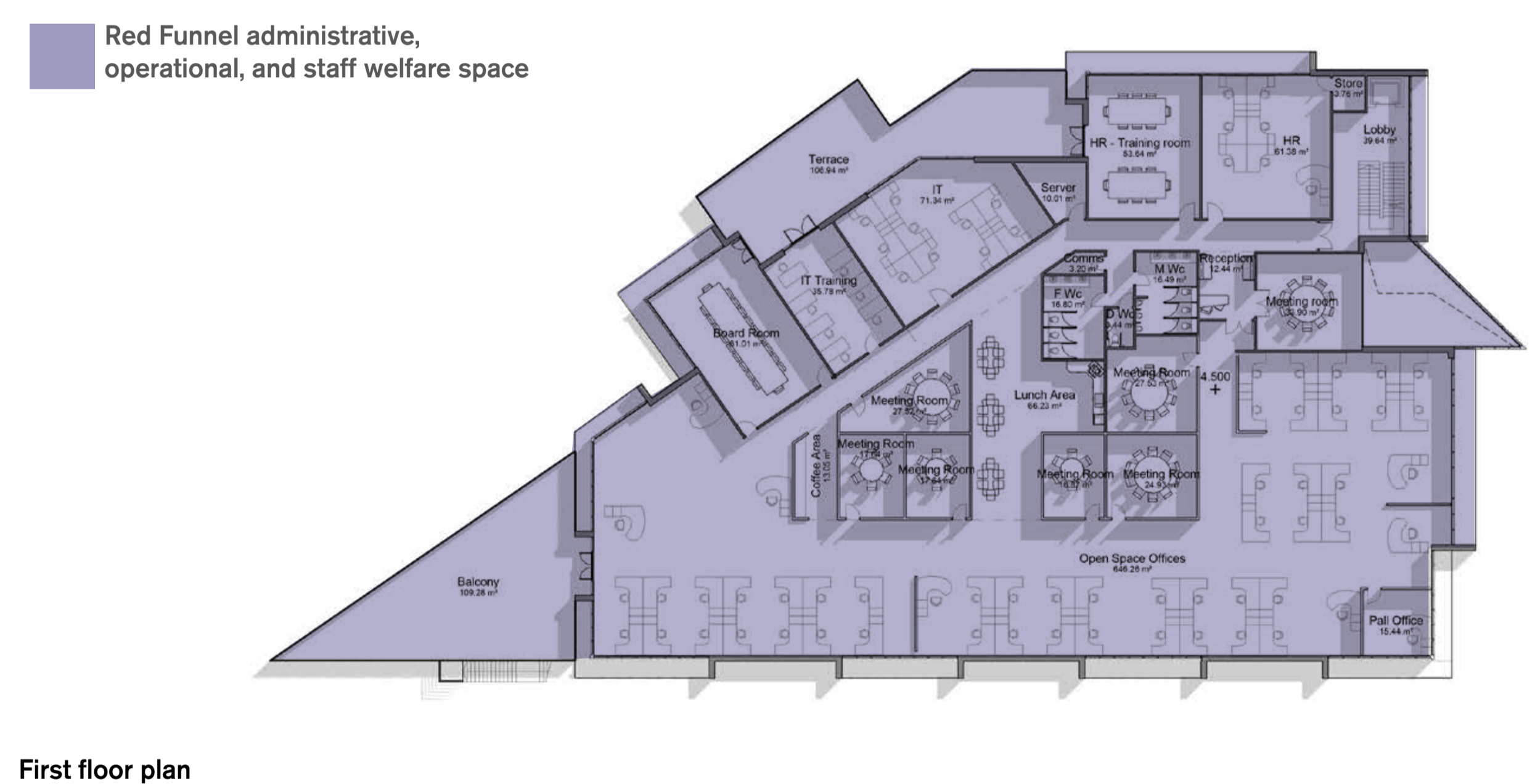
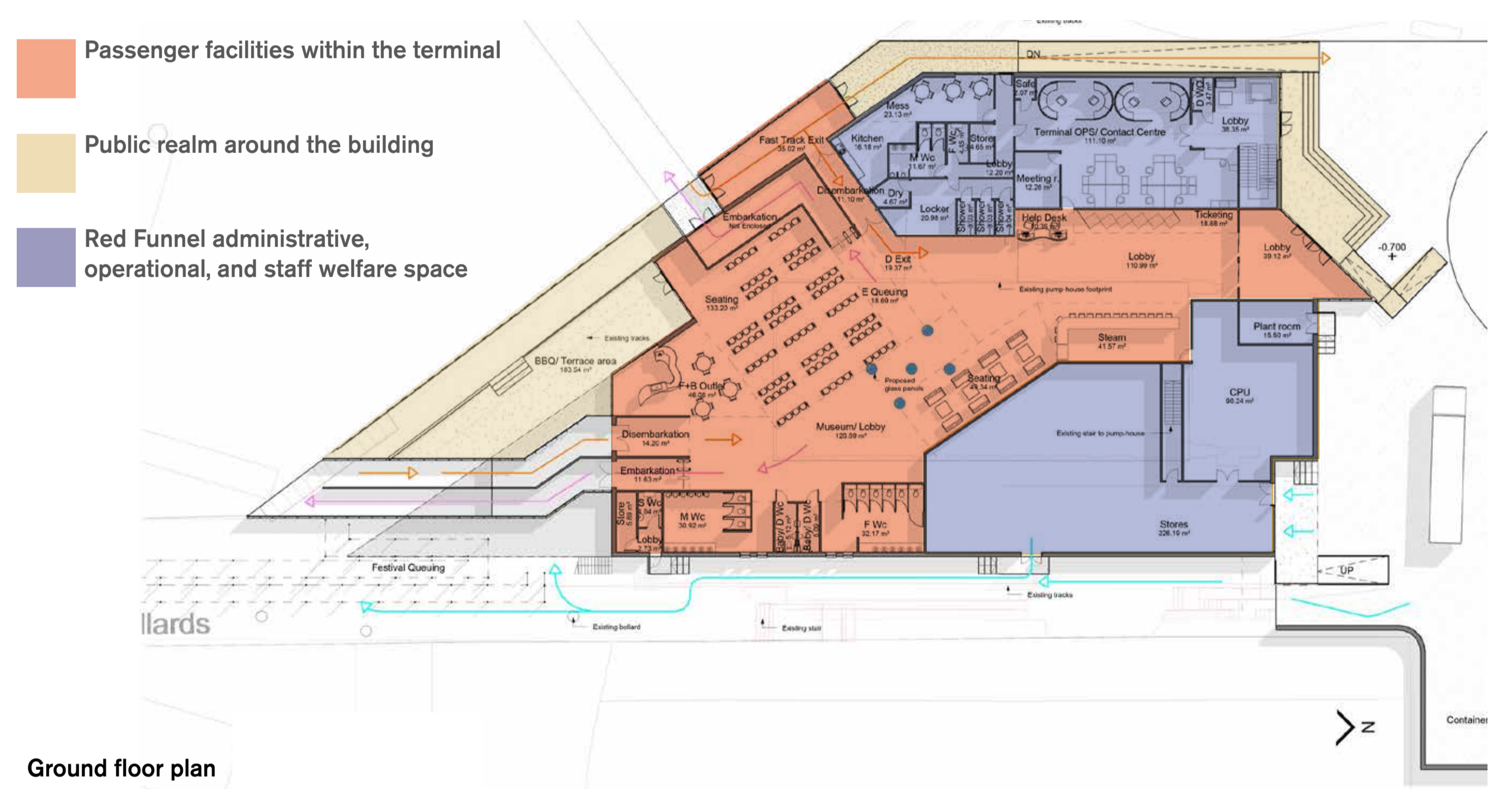
p4, Connecting Growth, Solent LEP, March 2014

“... from 2014, transport constraints reduce growth of both population and employment. This will impact on the contribution the area can make to the UK economy and have implications for the competitiveness of our businesses and the quality of life of our residents.”

p8, Connecting Growth, Solent LEP, March 2014

“Based on evidence there is a clear and mutually supportive package of investment that is required to support the Solent Strategic Economic Plan that enables our key assets to grow and unlock key development opportunities.”

p18, Connecting Growth, Solent LEP, March 2014



Emerging proposals - Red Funnel southern elevation

All images provided by Stride Treglown



the [current] Red Funnel area  
is very untidy



July 2014 consultation respondent